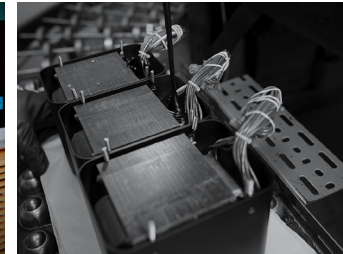


MR89 am / fm tuner

- The MR89 is the latest in a line of superb McIntosh tuners including the MR78 from the 1970s that many still think is the best tuner ever made.
- The MR89 features exclusive McIntosh radio frequency circuitry that is capable of receiving both strong FM signals from nearby stations – something that can overload and cause distortion in lesser tuners – and is also able to tune in weaker FM signals with little to no noise.
- A multitude of advancements have been made in the MR89 to make your radio listening more pleasurable. Sensitivity, Signal to Noise Ratio, Harmonic Distortion, Channel Selectivity, and Stereo Separation were thoroughly analyzed and thoughtfully updated.
- New features have also been added including a High Blend option in the Stereo Blending function, as well as Softmute, and Highcut.
- 60dB output meters show the signal level that's being delivered from the analog outputs of each channel. Depending on the program received, the meters are a good indication of the MR89's excellent stereo separation capabilities.
- A pair of balanced and unbalanced analog outputs along with one each of digital coax and optical outputs are included to connect the MR89 to your home audio system.
- Supports the FM Radio Broadcast Data System (RBDS)¹, allowing the display to show various information such as station name, music genre, artist name, and song title (if transmitted by the station).

1) RBDS is only available in the United States.



Music is Everywhere

McIntosh[®]

LEGENDARY PERFORMANCE[®]

www.mcintoshlabs.com

MR89 am / fm tuner

FM SPECIFICATIONS

Tuning Range:

87.5MHz - 108.0MHz (Europe)
88.1MHz - 107.9MHz (USA)
76.0MHz - 108.0MHz (Japan)

Channel Spacing:

50kHz, 100kHz or 200kHz

Antenna Input:

75 ohms, Type "F" Coax connector

Useable Sensitivity:

2uV

Signal To Noise Ratio:

Mono: 70dB
Stereo: 68dB

Frequency Response:

±1dB 20Hz to 18kHz

Total Harmonic Distortion:

Mono: 0.1%; Stereo: 0.3%

Channel Selectivity:

70dB Adjacent Channel
75dB Alternate Channel

Stereo Separation:

45dB

AM SPECIFICATIONS

Tuning Range:

531kHz - 1701kHz (Europe)
530kHz - 1700kHz (USA)
531kHz - 1629kHz (Japan)

Channel Spacing:

9kHz or 10kHz

Antenna Input:

Balanced RJ45 (for use only with supplied RAA2 Remote AM Antenna)

Sensitivity:

350uV/m

Signal To Noise Ratio:

55dB

Frequency Response:

±1dB 20Hz - 1.5kHz, -6dB 3kHz

Total Harmonic Distortion:

0.1%

Selectivity:

45dB Adjacent Channel

GENERAL SPECIFICATIONS

Outputs:

1 Balanced
1 Unbalanced

1 Coax

1 Optical

Rated Output:

1Vrms Unbalanced
2Vrms Balanced

Output Impedance:

100 ohms Unbalanced or Balanced

Overall Dimensions (W x H x D):

17-1/2" (44.45cm) x 6" (15.24cm)
x 15-7/8" (40.32cm)

Weight:

25.5 lbs (11.6 kg) net
40 lbs (18.1 kg) in shipping carton

For the Consumer's Protection:

In order to ensure the highest level of customer satisfaction, new McIntosh products may only be purchased from an Authorized McIntosh Dealer; and, with certain limited exceptions may only be purchased over-the-counter or delivered and installed by the Authorized McIntosh Dealer. McIntosh does not warrant, in any way, products that are purchased from anyone who is not an Authorized McIntosh Dealer, or that have had their serial numbers altered or defaced.



Companion Products

The MC611 or MC3500 Mk II Amplifier, C53 or C2700 Preamplifier, MA8950 or MA352 Integrated Amplifier, MCD600 SACD/CD Player, MT5 Turntable, MS500 Music Streamer, MEN220 Room Correction System, MPC500 Power Controller, and XR100 Loudspeakers are logical companions for the MR89 AM/FM Tuner. Your Authorized Dealer can provide additional information on other McIntosh product combinations.

To learn more, please call us at 1.800.538.6576.

McIntosh®

LEGENDARY PERFORMANCE®

www.mcintoshlabs.com